

An Invitation to Support
Building Our Future
The Fundraiser for
St. Theresa Parish





A Message from Most Reverend Jaime Soto Bishop of Sacramento

Dear Parishioners of St. Theresa Parish:

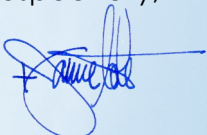
I appreciate the community of St. Theresa Parish for your exemplary dedication, commitment, and sacrifice. You are a part of a proud legacy that began with a handful of proud Catholic families who established the presence of Christ in South Lake Tahoe 67 years ago. Your generous sacrifices keep alive the sacramental presence of the Lord Jesus in that favored portion of God's vineyard.

Under the leadership of your Parochial Administrator, Rev. Mauricio Hurtado as well as the collaboration of staff and volunteers, St. Theresa parish is a vibrant Catholic center for proclaiming the joy of the gospel in both word and deed. During each visit to your parish I have enjoyed gathering around the table of the Lord and savoring your spirited fellowship.

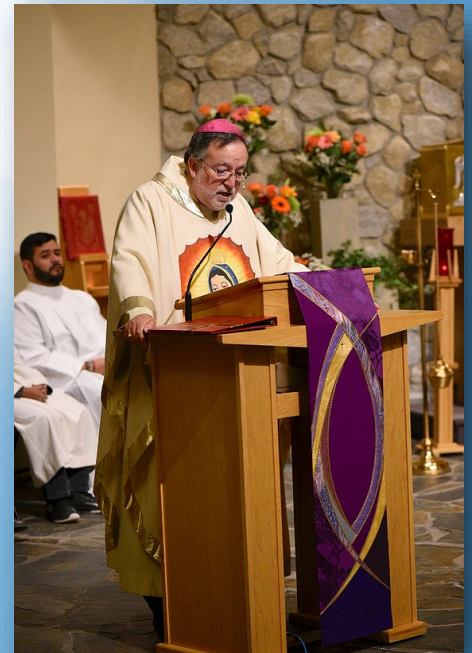
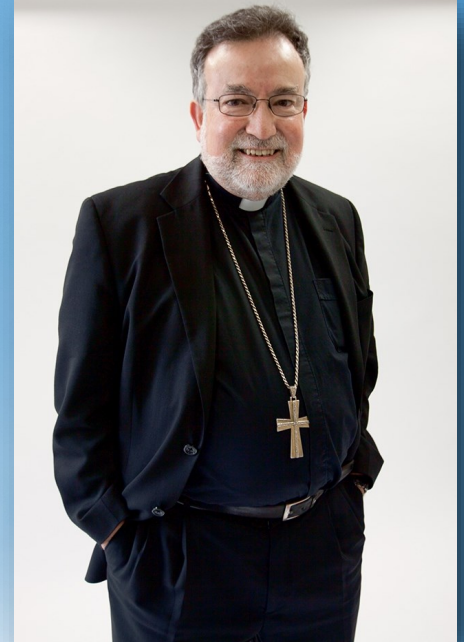
God has blessed St. Theresa Parish abundantly in the past and continues to do so today. Our Catholic faith is alive and is made visible through the hospitality, openness, and warmth that is reflected in the many ministries of your parish. As you celebrate the 67th anniversary of the establishment of the parish, it is appropriate you look, not only to the needs of the present, but also to the needs of future generations. For this reason, I endorse the **Building Our Future Fundraiser**.

We cannot tire of the good work still to be accomplished. As the followers of Jesus, we must continue to proclaim the Word of God and share the Bread of Life until Christ comes in all His glory. I am confident that the St. Theresa Parish Community will meet this challenge with the same generous spirit your Catholic forebears demonstrated so many years ago. Be assured of my abiding admiration and prayers as you take up this new pastoral challenge. Your generous donation of time, talent and treasure will build up the Church as a living temple dedicated to the greater glory to God. Jesus is the capstone of this Temple. **"In him you also are being built together into a dwelling place of God in the Spirit."** (Eph. 2.22)

Respectfully,



+Jaime Soto
Bishop of Sacramento





A Message from Rev. Mauricio Hurtado

For the past 4 years, I have had the good fortune to be part of the Faith community of St. Theresa. Our parish is a center for the spiritual growth of our children, young adults, families and seniors. Today, we are reaching out and touching people's lives in new and meaningful ways, in ways that we could never have envisioned were possible. **BUT THERE IS SO MUCH MORE WE CAN DO. The time has come for us to prepare for an even more vibrant future!**



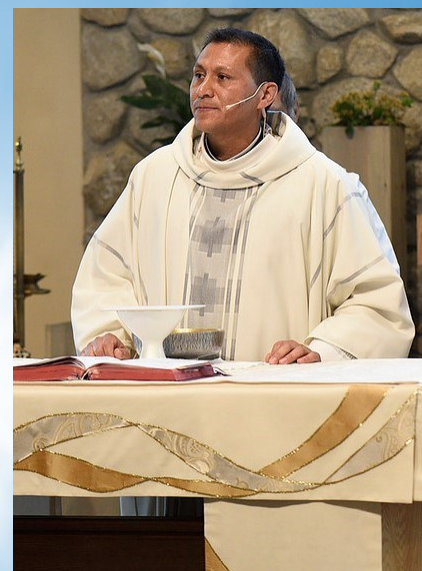
St. Theresa Parish is on the threshold of fulfilling a vision to reinvigorate our spiritual lives while updating our parish facilities. The centerpiece of our journey— **upgrading our parish office and sign** brings together under one roof a place for ministry, hospitality, education and community engagement that define us as a Parish Community.

Imagine a sign out front worthy of the parish in which we worship. A visual aid to all visitors to our community that we are here and welcoming. A parish office able to accommodate all of our faith community. Updated with the latest ADA and security standards. These upgrades may seem small but they are necessary to the growth of our beautiful parish.

A small group of our parish leaders has come together to formulate a plan to meet the costs of our proposed facility updates, with God's grace and guidance we have embarked upon **Building Our Future Fundraiser**.

Throughout our history, the people of St. Theresa Parish have demonstrated generosity and willingness to sacrifice for current needs and pass on to future generations. **Now it's our time** to update our place of worship that helps nourish our Faith community.

I invite you to **put your faith in action** as an ambassador for **Building Our Future** — advocating the fundraiser among your fellow parishioners; contributing as generously as you are able; and, most importantly, praying for our success.



Faithfully in Christ,

Rev. Mauricio Hurtado

Rev. Mauricio Hurtado
Parochial Administrator





A Faith Filled History

Founded in 1951 on the vision that Catholics of South Lake Tahoe would grow as people of faith, united with God the Father, Son and the Holy Spirit, parishioners have gathered in this welcoming community, inviting all to join in prayer and fellowship.

As one united parish, we are bound by our faith and the parish's vibrant programs of spiritual, educational, and social ministry. Yet **there is room for further growth – literally, figuratively and spiritually.**

Imagine for a moment: when every single pew is filled, at every single Mass; where our Faith Community is moved to new heights of closeness with our Lord; where we become a beacon of light for those away from the Church; and, where we redouble our efforts to help those less fortunate.



Times are Changing—So Must We

For far too long our parish has neglected upgrades to facilities necessary to a vibrant and safe environment. We need improvements to our parish that can no longer be ignored.

Updating our facilities to ADA compliance and increasing our security is a necessary next step for our parish facilities.

We are Here, Its Time Others Knew

Our Parish sign is in dire disrepair, it is our “Announcement” to the community and our avenue of sharing the Good Word. We need to have a sign that attracts visitors and lets people know that we are here.



Safety at Our Parish

Our parish office is dated and inaccessible to those with physical disabilities. It is past time for us to update it to current ADA compliance.

An increase in security standards is also in need. The safety of our parish staff must be one of our top priorities.



Building Our Future

The Fundraiser for St. Theresa Parish

Our Vision – Parish Upgrades

New Parish Sign:

The current parish sign is leaning and about to blow over. It has been fortified one too many times. It is small and not noticeable to those driving by on the road. With a new bigger sign we hope to announce the presence of our parish.

Parish Office Security:

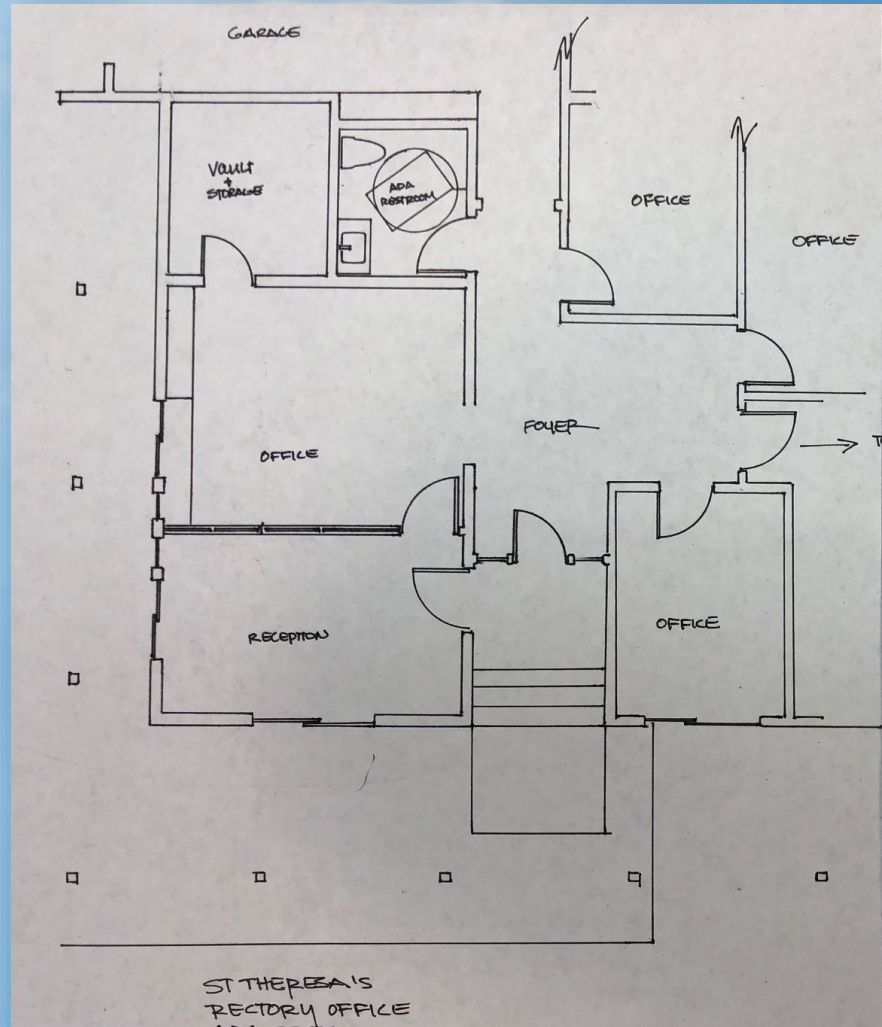
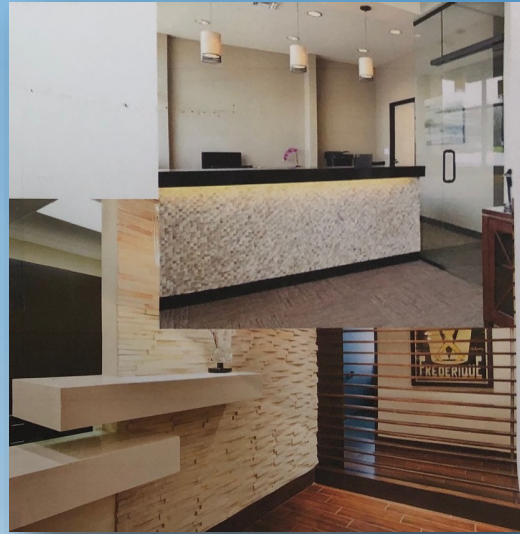
The rectory office has only one main entrance and the only other door is from the customer side of the front counter. This is not only a fire hazard but unsafe for staff if someone looking to harm were to enter.

ADA Compliance:

Currently our office is hard to get to, if not impossible for those with disabilities. The entrance has only steps leading to it. It needs an accessible ramp and entryway.

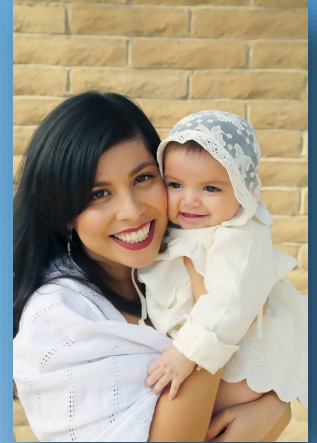
What Improvements will be made:

- * New Parish Sign
- * Accessible ramp from parking lot to office
- * Restroom will be made ADA compliant
- * Office will be remodeled to have an additional door to provide an exit for staff.



Building Our Future

Cost estimates for our new parish upgrades run upwards of \$150,000. With the financial and technical assistance of the Diocese of Sacramento our financing plan entails one-time gifts and pledges from our parishioners and visitors and, most important the success of **Building Our Future Fundraiser** which seeks to raise a minimum of \$150,000 in pledges.



To meet our financial challenge requires sacrificial support of all members of this Faith Community. We invite you to help realize our vision by pledging your support to **Building Our Future**. Please give prayerful consideration to being a part of our wonderful future. **St. Theresa needs you!** Let us ask the Good Lord to bless our endeavors and to inspire us to be generous—so that as one family in faith for our Church we may grow into a future that will be safe and secure for generations to come.

The following gift plans are a guideline, which may help you determine your sacrificial commitment. Pledges may be fulfilled over a two-year period and may be paid in cash or by credit card or bank transfer. An initial offering of 20% is requested. All gifts regardless of the amount will be appreciated and acknowledged.

GIFT LEVEL	20% INITIAL OFFERING	ANNUAL (2)	SEMI-ANNUAL (4)	QUARTERLY (8)	MONTHLY (24)
\$ 50,000	\$ 10,000	\$ 20,000	\$ 10,000	\$ 6,250	\$ 2,084
\$ 25,000	\$ 5,000	\$ 12,500	\$ 6,250	\$ 3,125	\$ 1,042
\$15,000	\$ 3,000	\$ 7,500	\$ 3,750	\$ 1,875	\$ 625
\$ 10,000	\$ 2,000	\$ 5,000	\$ 2,500	\$ 1,250	\$ 417
\$7,500	\$ 1,500	\$ 3,750	\$ 1,875	\$ 938	\$ 313
\$ 5,000	\$ 1,000	\$ 2,500	\$ 1,250	\$ 625	\$ 208
\$ 3,000	\$ 600	\$ 1,500	\$ 750	\$ 375	\$ 125
\$ 2,000	\$ 400	\$ 1,000	\$ 500	\$ 250	\$ 83

Please Make Checks Payable to:

St. Theresa Parish
1041 Lyons Avenue, South Lake Tahoe, CA 96150
Phone: (530) 544-3533
sttheresa@tahoecatholic.com